

PIPER

The Food-Focused Equipment Company



Racks

A Reputation of Fine Craftsmanship

Every product is skillfully engineered with uncompromising attention to detail – for an end result that is practical, reliable and made to withstand the rigors of the bakery, foodservice and institutional environments for years to come.

Piper engineers take the extra steps needed to ensure the highest-performing, most reliable products in the field. Not only is each piece of equipment produced by skilled craftsmen who use the most durable components available; every product is also rigorously tested before shipment.

The resulting quality is apparent—down to the last detail.



520

Knock-down Angle Racks

Strength and versatility at an economical price

1" x 2" aluminum glides fully welded and shipped knocked-down to save cost. Sized for full-size sheet pans and available in capacities from 6 to 20 pans.

- Twice the welds of competitive racks
- Double welded side glides for added strength
- Assembles in minutes (fully welded available)
- Choose from roll-in, front- or side-load models



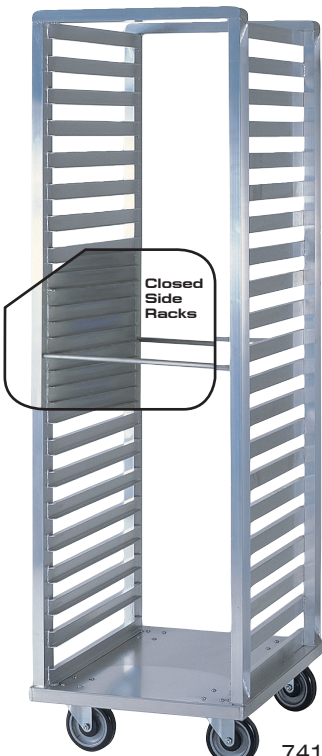
612

Angle Racks

Strong, practical & versatile; our most popular rack

A fully welded frame of aluminum channels, 2" glides and our signature Piper Base. Built for full-size sheet pans in 12 to 30-pan capacities. Custom sizes available.

- 1/2" diameter tie bar avoids distortion and gives greater side-to-side strength
- Signature Piper Base
- 2"-wide glides are welded front and back to the frame
- Also available in roll-in height for freezers and proofers



741

Channel & Closed-Side Racks

Higher capacity, increased functionality, our strongest and most durable racks

Our channel racks use the same glide system and signature base found in our popular 941 Transport Cabinet.

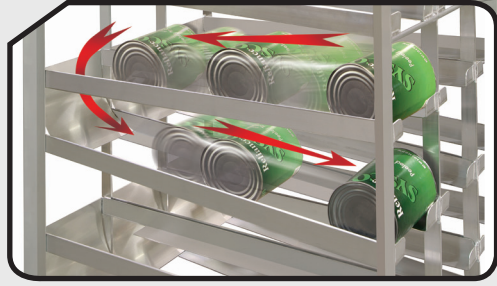
- No-tip channel design allows trays to be partially withdrawn without falling
- Holds up to 41 full-size sheet pans
- Fully welded ledges are 1-1/2" inches apart
- Choose from front- or side-load models

Can Racks

Durable and easy to use

Our can racks are available in many styles, including rear-loading with stainless steel worktop, mobile, and front-loading with first-in / first-out storage system

- All Heliarc welded aluminum construction
- Inclined can glides provide easy access to product and automatic can advancement
- Glides are 1-1/2" welded to the frame



Front Loading System

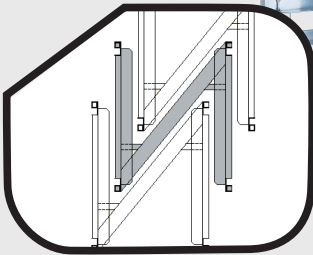


CSR-FF-156

Nesting Rack

The ultimate space-saving storage technique for empty racks

- When empty, nesting racks fit together, minimizing storage space
- Nesting allows one person the ability to move multiple empty racks easily
- Reinforced with fully welded C-channel for strength, rigidity and stability
- 1" x 2" extruded aluminum glides welded to the frame front and back



618-N



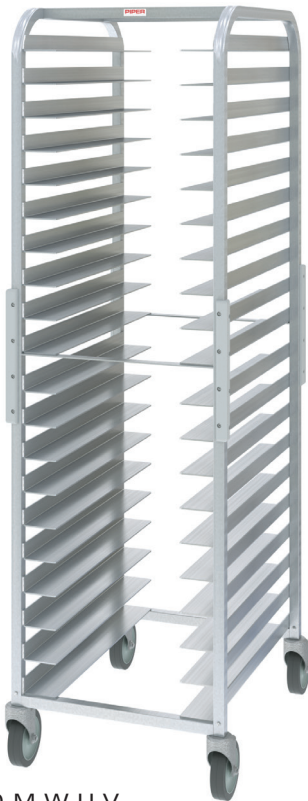
612-U

Universal Angle Racks

Versatile design for optimal performance

2-tiered glides are spaced to hold multiple sized trays simultaneously.

- Fully welded aluminum frame
- Glides are stepped 1" x 5" x .080"-thick extruded aluminum and welded to front and back of the frame
- Accommodates 12" x 20" steam pans up to 6" deep; 18" x 26" sheet pans and 18" x 13" trays
- Available in roll-in height
- Also available with adjustable glides



520-M-W-U-V

Universal Guide Racks

For Refrigerators or Freezers

The extra wide guides on our universal racks accommodate 18" x 26" sheet pans and 12" x 20" steam pans simultaneously.

- 1" Wide aluminum tie bars for extra rigidity.
- 5" diameter, heavy duty, double ball bearing swivel casters with non-marking polyurethane tires.



MPR-60-4M

Multi-Purpose Transport & Drying Rack

Aluminum multi-purpose transport and drying rack.

The extended wire dividers on our MPR racks allow multiple size pans and trays to be carried simultaneously.

- The pan dividers are 1-1/2" on center
- Pan supports have removable sections of chromium plated wire dividers to separate the pans or trays for drying
- 5" diameter, heavy duty, double ball bearing swivel casters with non-marking polyurethane tires. Two casters are fitted with brakes

Standard Racks

Knock-Down Angle Rack Specifications

Model #	Description	Length	Width	Height	Pan Capacity	Ship Weight (lbs)
506-M	Mini	26"	21"	32"	6 pan	22
506	End Load	26"	21"	65"	6 pan	35
509	End Load	26"	21"	65"	9 pan	35
512	End Load	26"	21"	68"	12 pan	35
520	End Load	26"	21"	68"	20 pan	35
505-M-T	Table Top	26"	21"	26½"	5 pan	18
518-S	Side Load	18"	28½"	65"	18 pan	35
520-S	Side Load	18"	28½"	71"	20 pan	35
R518	Roll-in	26"	21"	65"	18 pan	35

Welded models available.

Angle Rack Specifications

Model #	Description	Length	Width	Height	Pan Capacity	Ship Weight (lbs)
612	End Load	27"	21"	67⅞"	12 pan	85
620	End Load	27"	21"	67⅞"	20 pan	100
R611	Roll-in	26¼"	20⅝"	64¾"	11 pan	50
R618	Roll-in	26¼"	20⅝"	64¾"	18 pan	60
R626	Roll-in	26¼"	20⅝"	64¾"	26 pan	75
630	End Load	27"	21"	67⅞"	30 pan	115

Channel Rack Specifications

Model #	Description	Length	Width	Height	Pan Capacity	Ship Weight (lbs)
733	End Load	27⅝"	21"	57¼"	33 pan	65
741	End Load	27⅝"	21"	69¼"	41 pan	70
733-S	Side Load	19⅞"	29⅞"	57¼"	33 pan	65
741-S	Side Load	19⅞"	29⅞"	69¼"	41 pan	70

Closed-side Rack Specifications

Model #	Description	Length	Width	Height	Pan Capacity	Ship Weight (lbs)
822	End Load	27⅝"	21"	40¾"	22 pan	70
841	End Load	27⅝"	21"	69¼"	41 pan	88
822-S	Side Load	21"	27⅝"	40¾"	22 pan	70
841-S	Side Load	21"	27⅝"	69¼"	41 pan	88
R836	Roll-in	27⅝"	21"	64½"	36 pan	79

Universal Angle Rack Specifications

Model #	Description	Length	Width	Height	Pan Capacity	Ship Weight (lbs)
612-U	Universal	27½"	23½"	69"	12-24 pan	95
620-U	Universal	27½"	23½"	69"	20-40 pan	110
R611-U	Roll-in	27½"	24"	63"	11-22 pan	65
R618-U	Roll-in	27½"	24"	63"	18-36 pan	70

Designed to hold 18" x 26" or 18" x 13" sheet pans and/or 12" x 20" steam table pans in 2", 4" or 6" depths

Oval Tray Rack Specifications

Model #	Description	Length	Width	Height	Pan Capacity	Ship Weight (lbs)
108	Oval Tray	26"	26"	70"	8 pan	36
110	Oval Tray	26"	26"	70"	10 pan	40

Extra wide 3¼" tray glides, holds trays 22" x 26⅞"

Specialty Racks

Nesting & Glass Rack Specifications

Model #	Description	Length	Width	Height	Pan Capacity	Ship Weight (lbs)
618-N	*Nesting	27"	21"	63"	18 pan	80
208	***Glass	22"	24"	70"	8 racks	35
210	***Glass	22"	24"	70"	10 racks	38

*Designed to hold 18" x 26" or 18" x 13" sheet pans

***Designed to hold 20" x 20" racks

Angle Guide Rack Specifications

Model #	Width	Depth	Height	Spacing	Capacity	Weight
(18" x 26" Pans)						
ALT60-1826-16	21-1/2"	26"	60"	3"	16	50
ALT67-1826-18	21-1/2"	26"	67"	3"	18	55

Angle Guide Rack Specifications

Model #	Width	Depth	Height	Spacing	Capacity	Weight
(18" x 26" Pans)						
A36-1826-9	20-1/2"	26"	36"	3"	9	62
A60-1826-16	20-1/2"	26"	60"	3"	16	70
A72-1826-20	20-1/2"	26"	72"	3"	20	75
2A72-1826-40	40"	26"	72"	3"	40	70
A36-1826-5	20-1/2"	26"	36"	5"	5	58
A48-1826-8	20-1/2"	26"	48"	5"	8	62
A60-1826-10	20-1/2"	26"	60"	5"	10	66
A72-1826-12	20-1/2"	26"	72"	5"	12	70
2A72-1826-24	40"	26"	72"	5"	24	140

Wide Angle Guide Lug Rack Specifications

Model #	Width	Depth	Height	Spacing	Capacity	Weight
O.C. (18"x26"x6")						
One Bank						
W68-1826-9	20-1/2"	26"	68"	6-3/8"	9	90
Two Bank						
2W68-1826-18	40"	26"	68"	6-3/8"	18	170
Three Bank						
3W68-1826-27	59-1/2"	26"	68"	6-3/8"	27	250

Universal Guide Roll-In Rack Specifications

Model #	Width	Depth	Height	Capacity	Wt.
(18"x26") (12"x20")					
RIU69-12	23-3/4"	26"	69"	12	24 90
RIU64-11	23-3/4"	26"	64-1/2"	11	22 85
RIU58-10	23-3/4"	26"	58-1/2"	10	20 80

Spacing O.C. = 4-7/8"

Compound Guide Rack Specifications

Model #	Width	Depth	Height	Spacing	Capacity	Weight
(18" x 26" Pans)						
C46-1826-24	20-5/8"	26"	46"	1-1/2"	24	68
C60-1826-32	20-5/8"	26"	60"	1-1/2"	32	80
C70-1826-40	20-5/8"	26"	70"	1-1/2"	40	95

Can Storage Rack Specifications

Model #	Width	Depth	Height	Capacity	Weight
CSR-84	26-3/8"	42-1/2"	40-3/4"	84 #10 cans	85
CSR-210	26-3/8"	42-1/2"	86-1/2"	210 #10 cans	168
CSR-308	26-3/8"	42-1/2"	72-3/4"	308 #5 cans	190
CSR-FF-156	27-1/4"	42"	81-1/16"	156 #10 cans	160

Transport & Drying Rack Specifications

Model #	Width	Depth	Height	Spacing	Capacity	Weight
(18" x 26" Pans)						
MPR-60-4M	62"	23"	74"	(varies contact factory)	210	



PIPER

The Food-Focused Equipment Company

Visit www.piperonline.net to discover our complete line of foodservice equipment solutions.

300 S. 84th Avenue
Wausau, WI 54401
Phone: 800-544-3057
Fax: 715-842-3125
www.piperonline.net

CFSBRANDS.