

Champion®

The Dishwashing Machine Specialists

EFFECTIVE March 7, 2022 Price List Schedule

	Page
Glasswashers	2
Undercounter Dishwashing Machines.	3
Door-Type Dishwashing Machines	4
PRO Series Rack Conveyor Dishwashing Machines	6
E-Series Rack Conveyor Dishwashing Machines	7
Rack Conveyor Options	8
E-Series Upright Conveyor Dishwashing Machines	10
PRO Series Upright Conveyor Dishwashing Machines	11
Upright Conveyor Options	12
Pot, Pan & Utensil Warewashing Machines	14
Powered Wash Sink Systems	17
Circular Conveyor Dishwashing Machines	18
Bi-Line Waste Handling Systems.	19
Bi-Line by Champion Conveyor Systems	20
Terms & Conditions of Sale	21
Limited Warranty	22

Visit our website for the most up to date information
www.ChampionIndustries.com
www.BilineConveyors.com

Full listing of spec sheets and manuals available!

Glasswashers



CG

- 12" glass clearance
- 3 built-in chemical dispensers
- Self-flushing wash chamber
- Internal upper drain screen
- Cool fresh water rinse
- Approx. 1000, 2-1/2" glasses/hr.

All photography is for general visual representation only. Please refer to specifications for the latest detailed product information.



CG4 and CG6

- Fully automatic operation
- 3 built-in chemical dispensers
- 140°F wash
- Cool fresh water rinse
- Approx. 2,000, 2-1/2" glasses/hr.
- Right-to-left or left-to-right operation

Rotary Models		Standard Voltages	Approximate Shipping Wt.	Suggested List Price
CG	Rotary Glasswasher	208/230/60/1	204 lbs.	\$ 13,025
Pass Thru Models				
CG4	Pass Thru Glasswasher	208/230/60/1	227 lbs.	\$ 23,095
CG6	Pass Thru Glasswasher	208/230/60/1	297 lbs.	25.600

**Specify left-to-right or right-to-left operation when ordering.*

Options			
CG12	Stainless Steel Splash Guards for CG4 (2)	Shipped with machine	\$ 460
CG24	Stainless Steel Splash Guards for CG6 (2)	Shipped with machine	510
CG48	Stainless Steel Back for CG4	Shipped with machine	790
CG72	Stainless Steel Back for CG6	Shipped with machine	875
Kit 264	Washdown Hose	4 lbs.	460
Kit 332	Casters - Set of 4; 2 Locking, 2 Stationary	5 lbs.	1,060
CG47	Drain Tray and Waste Collector - This option entitles the purchaser to a full one year parts and labor warranty (CG, CG4, CG6)	2 lbs.	495
Quick Disconnect Package (includes casters)		10 lbs.	1,425

Glasswasher Warranty: One (1) year parts - 90 days labor

Undercounter Dishwashing Machines

Standard Features

- "Multi-Phase" – allows for infield conversion from single to three phase with ease. Infield conversion should be provided by a qualified electrician
- "Shear Energy" – a reduction in energy requirements while maximizing performance
- Pumped drain
- Extended wash switch (UH230, UH330B, UH330ADA only)
- Top-mounted slide-out control cabinet
- Door safety switch
- 1-Hp wash pump motor

- Dual NSF Pot & Pan rated (UH230B, UH330B)
- Built-in booster heater (High Temp Only)
- 90-second time cycle (UH230 only)
- Detergent and rinse aid pumps standard
- Top and side panels standard
- (1) peg rack and (1) flat rack

★ **Rinse Sentry** monitors the booster temperature and automatically extends the cycle time to ensure 180°F final rinse. (High Temp Only)



Undercounter – High Temperature with Booster		Standard Voltages	Approx. Ship. Wt.	Booster Rise	Suggested List Price
UH-130B	Hot Water, with Built-in booster, fill and drain	208-240/60/1	215 lbs.	70°F (6kW)	\$ 8,945
UH-230B	Hot Water, with Built-in booster, fresh water rinse solid state controls – ENERGY STAR® Qualified	208-240/60/1	215 lbs.	70°F (6kW)	11,455
UH-330B	Heat Recovery, Built in Booster – ENERGY STAR® Qualified	208-240/60/1	215 lbs.	70°F (5kW)	12,525
UH-330ADA	First undercounter to fit under ALL ADA Counters! – ENERGY STAR® Qualified	208-240/60/1	215 lbs.	70°F (5kW)	12,725

Undercounter – Low Temperature

UL-130	Low Temp, no Booster, Fill and Drain	115/60/1	198 lbs.		\$ 8,390
---------------	--------------------------------------	----------	----------	--	-----------------

Options

ION Scale Prevention System					\$ 1,055
Racks, additional peg or flat racks (specify type)	each	7 lbs.			125
8" Stand to provide nominal 22" working height		15 lbs.			815
17" Stainless Steel Stand – to provide nominal 32" working height		20 lbs.			1,300
Water Pressure Regulating Valve (unmounted) (standard on UH-230B)		2 lbs.			315
Drain Water Tempering Kit (unmounted)					865
3 Phase Wiring (pre-wired at factory)					405
1" Roller Kit					290
Chemical Alarm Kit (mounted)					1,085
Power Cord Kit (Single phase only)					405
9 kW 100° Rise Booster (available on UH-130B and UH-230B)					1,085
Drain Board					405
Door Interlock Switch (UH-330B & UH-330ADA)					370

NON STANDARD VOLTAGES: Contact Factory for availability and price. NOTE: Options prices apply only when ordered with machine.

Door-Type Dishwashing Machines

Standard Features

- Automatic tank fill
- Control circuit, 120-Volt
- Built-in stainless steel electric booster
- Detergent/chemical connection provisions
- Water pressure regulating valve — units ordered with booster (unmounted)
- Door safety switch
- Automatic drain valve
- Vent fan control
- Stainless steel enclosure panels
- Interchangeable upper and lower spray arms
- Low-water tank heat cut-off
- Racks: 1 peg rack and 1 flat rack



High Temperature		Standard Voltages	Approx. Ship. Wt.	Suggested List Price
DH6000	Electric (no booster)	208-240/60/1 or	300 lbs.	\$ 17,085
	Electric (70°F rise)	208-240/60/3 or 480/60/3		20,750
ENERGY STAR® Qualified				
DH6000-VHR	Ventless Heat Recovery Option	208-240/60/1 or	350 lbs.	27,370
	Electric (70°F rise)	208-240/60/3 or 480/60/3		
ENERGY STAR® Qualified				
DH6000	Electric (70°F rise)	208-240/60/1 or	300 lbs.	20,750
ENERGY STAR® Qualified		208-240/60/3		
DH2000	Electric	208-240/60/1 or 208-240/60/3	300 lbs.	15,130
Low Temperature				
DL2000	Electric	115/60/1	218 lbs.	\$ 11,590



Options	Suggested List Price
Drain Water Tempering Kit (unmounted)	\$ 1,145
Peg or Flat Racks (specify type)	(each) 125
Water Pressure Regulating Valve (unmounted - standard when machine has booster)	410
Shock Arrestor (unmounted)	135
Side Panels for DH2000 (standard on DH6000)	495
Flanged Feet	255
Splash Shield (for corner DH6000) (mounted to machine)	670
Door Interlock Switch (standard on DH-6000-VHR; available on DH-6000 w/booster)	1,070
ION Scale Prevention System (unmounted)	1,210
Chemical Pumps (detergent and rinse aid, mounted and interwired)	1,775
Two Point Electrical Connection (factory mounted and wired)	205

NON STANDARD VOLTAGES: Contact Factory for availability and price. NOTE: Options prices apply only when ordered with machine.

Dishwashing Machine Price List

Effective March 7, 2022

Supersedes all previous lists

Champion®

The Dishwashing Machine Specialists

Door-Type Dishwashing Machines

Standard Features

- Large 27" opening for trays, sheet pans or 60-quart mixing bowl
- Adjustable cycle selector
- Automatic tank fill
- Automatic drain valve
- Door-activated cycle start
- Electric tank heat
- Low-water tank heat protection
- Pot and Pan rated
- PLC controller
- HMI Intuitive touchscreen display
- 2-Hp TEFC motor
- Door safety switch
- Interchangeable upper and lower spray arms
- Stainless steel enclosure panels
- Detergent/chemical connection provisions
- Racks: 1 peg rack and 1 flat rack

DH6000T VHR



Tall Hood Machines		Standard Voltages	Approx. Ship. Wt.	Suggested List Price
DH6000T	Electric (no booster)	208-240/60/1;	450 lbs.	\$ 22,105
	Electric (70°F rise booster)	208-240/60/3		25,890
	ENERGY STAR® Qualified	480/60/3		
DH6000T-VHR	Electric (70°F rise booster) Ventless Door Machine ENERGY STAR® Qualified	208-240/60/1; 208-240/60/3 480/60/3	525 lbs.	32,770

Options

Drain Water Tempering Kit (unmounted)	\$ 1,145
Peg or Flat Racks (specify type)	(each) 125
Sheet Pan Rack	(each) 410
Water Pressure Regulating Valve (unmounted – standard when machine has booster)	410
Shock Arrestor (unmounted)	135
Flanged Feet	255
Splash Shield (for corner DH6000T) (mounted to machine)	750
Door Interlock Switch (standard on VHR; optional on standard w/booster)	1,070
ION Scale Prevention System (unmounted)	1,210
Chemical Pumps (detergent and rinse aid, mounted and interwired)	1,775
Two Point Electrical Connection (factory mounted and wired)	205

NON STANDARD VOLTAGES: Contact Factory for availability and price. NOTE: Options prices apply only when ordered with machine.

3765 Champion Blvd, Winston-Salem, NC 27105 | 800/532-8591; Fax 336/661-1979 | ChampionIndustries.com

PRO Series Rack Conveyors

PRO Series
rack conveyor
WAREWASHERS



Model 44 PRO

Standard Features

- **NEW PRO**portional Rinse System – only 100 gallons of water per hour
- **NEW PRO**gressive Drive System
- Near constant movement of the dish rack equating to even consistency in washing and rinsing
- Patent Pending design
- **PRO**digy Controller
- Breakthrough in technology with HMI touchscreen
- Active alerts

- Auto delime
- Conveyor dwell
- Built-in machine operation and demo slides!
- Service log and intelligent troubleshooting; saves service costs!
- Heavy Duty Construction – all stainless steel and copper
- No plastic
- Solid frame
- Single piece hood and tank design.
- ENERGY STAR® Qualified

High Temperature – Single Tank (electric or steam)			Approx. Ship. Wt.	Suggested List Price
Model 44 PRO	(44" single tank, electric)	ENERGY STAR® Qualified	600 lbs	\$ 36,915
Model 66 PRO	(44" single tank + 22" prewash, electric)	ENERGY STAR® Qualified	600 lbs	58,230
Model 80 PRO-HD	(44" single tank + 36" prewash, electric)	ENERGY STAR® Qualified	900 lbs.	68,370
*High Temperature – Two Tank (electric or steam)				
Model 64 PRO	(64" two tank)	ENERGY STAR® Qualified	865 lbs.	\$ 78,610
Model 86 PRO	(64" two tank with 22" prewash)	ENERGY STAR® Qualified	1015 lbs.	101,655
Model 100 PRO	(64" two tank w/36" prewash, heavy duty)	ENERGY STAR® Qualified	1265 lbs.	117,055
Ventless High Temperature – Single Tank				
Model 44 PRO VHR	(Single tank, ventless heat recovery, electric only)		865 lbs.	Contact Factory
Model 66 PRO VHR	(Single tank VHR + prewash, electric)		950 lbs.	
Model 80 PRO-HD-VHR	(Single tank VHR + heavy duty prewash, electric)		1055 lbs.	
Ventless High Temperature – Two Tank				
Model 64 PRO VHR	(Two tank, ventless heat recovery)		865 lbs.	Contact Factory
Model 86 PRO VHR	(Two tank VHR + prewash, electric)		950 lbs.	
Model 100 PRO-HD-VHR	(Two tank VHR + heavy duty prewash, electric)		1055 lbs.	

Above models available in any of the following voltages: 208/60/1; 240/60/1; 208/60/3; 240/60/3; 480/60/3.

*When ordering, please specify the direction of operation, voltage and phase.

PRO VHR Series: No Hood Required Saving \$10,000s in Energy and Infrastructure!

- Same great features of the PRO series with the addition of the VHR System.
- VHR uses heat recovery to preheat incoming cold water to 160° before traveling to the booster.
- VHR System contains a heat pump that cools the exiting air to 70° or below.
- The same refrigerant gas also heats the wash tank during operation saving kW; thus eliminating the need for a hood and saving tens of thousands in energy, infrastructure and installation!



Model 44 PRO VHR

NON STANDARD VOLTAGES: Contact Factory for availability and price. NOTE: Options prices apply only when ordered with machine.

E-Series Rack Conveyors



Standard Features

- **ENERGY STAR® Qualified**
- One-piece stainless steel upper & lower spray arm assemblies
- Standard vertical opening accommodates 18" x 26" sheet pans (excludes FF machines)
- Anti-jam conveyor drive system
- Energy Sentinel (idle pump shut-off)
- Convenient top-mounted controls
- Sloped internal surfaces for efficient water return to wash tank
- Automatic tank fill
- Common utility connections
- Door safety switch
- Insulated swing-out doors
- Enclosure panels (front & sides)
- Low-water tank heat protection
- Rinse-saver device
- Stainless steel heavy-gauge construction, including base and feet
- Electric tank heat
- Wash/rinse pump 2 Hp motor
- Stainless steel pump & impeller
- Internal removable scrap basket
- Ball valve drain



Model 54DR

Shown with
optional
vent cowls

*Circulating 300 gallons per hour
with only 112 gallons actual fresh
water consumption*

High Temperature - Single Tank		DualRinse®	Approx. Ship. Wt.	Suggested List Price
Model 54 DR	(54" single tank, dual rinse) ENERGY STAR® Qualified		650 lbs	\$ 52,940
Single Tank with 22" Prewash				
Model 76 DRPW	(54" w/22" prewash, dual rinse) ENERGY STAR® Qualified		750 lbs	76,450
Single Tank with 26" Front Feed				
Model 70DRFFPW	(44" single tank + front feed prewash, electric) ENERGY STAR® Qualified		900 lbs.	68,635
Model 80 DRFFPW	(54" single tank w/front feed & prewash, dual rinse) ENERGY STAR® Qualified		900 lbs.	84,535
Single Tank with 36" Heavy Duty Prewash				
Model 90 DRHDPW	(54" w/36" heavy duty prewash, dual rinse) ENERGY STAR® Qualified		900 lbs.	84,535
*High Temperature - Two Tank				
Model 84	(84" two tank) ENERGY STAR® Qualified		950 lbs.	92,260
Two Tank with 22" Prewash				
Model 106 PW	(84" two tank with 22" prewash) ENERGY STAR® Qualified		1055 lbs.	113,210
Two Tank with 26" Front Feed Prewash				
Model 90 FFPW	(64" two tank w/26" front feed prewash) ENERGY STAR® Qualified		900 lbs.	109,360
Model 110 FFPW	(84" two tank w/26" front feed prewash) ENERGY STAR® Qualified		1000 lbs.	117,055
Two Tank with 36" Heavy Duty Prewash				
Model 120 HDPW	(84" two tank w/36" prewash, heavy duty) ENERGY STAR® Qualified		1295 lbs.	124,755

Above models available in any of the following voltages: 208/60/1; 240/60/1; 208/60/3; 240/60/3; 480/60/3.

*When ordering, please specify the direction of operation, voltage and phase.

PRO & E-Series Rack Conveyor Options



CCT 90
90° Corner Conveyor Table
(shown) E-Series Only



PRO 90
90° Corner Conveyor Table
(shown) PRO Series Only



**Model RCT 64
or RCT 84**
Roller Conveyor Table



**Cantilever
Sideloader**
(No hood)

PRO and E-Series Rack Conveyor Machine Systems

	Approx. Ship. Wt.	Suggested List Price
PRO 90 - 90° Corner Conveyor Table	200 lbs.	\$ 12,735
CCT 90 - 90° Corner Conveyor Table	150 lbs.	12,735
RCT 64 - 64" Roller Conveyor Table (mobile or stationary)	90 lbs.	7,735
RCT 84 - 84" Roller Conveyor Table (mobile or stationary)	115 lbs.	10,100
Non-standard Lengths (must be ordered in 10" increments)		Contact Factory
Cantilever Sideloader No Hood 24"		9,125
30"		14,125
Extended Pawl Bar (extended drive unit) (only available on E-Series Machines)		Contact Factory

NOTE: Consult Factory for booster location when ordering Conveyor Table and Roller Tables.

PRO & E-Series Rack Conveyors Options

PRO Series
rack conveyor
WAREWASHERS



Suggested
List Price

Tank Heat (specify one)

Electric with Thermostat and Low-Water Cutoff

Standard - No Charge

Stainless Steel Closed Steam Coil or Injector with Thermostat and Low-water cutoff

Single Tank (E-Series and PRO)

\$ 3,765

Two Tank (E-Series and PRO)

4,425

Options

Heat Recovery System (must include factory installed built-in booster)

\$ 7,440

Blower Dryer - Steam or Electric (Shipping wt.: 600 lbs.)

17,440

Racks: Peg or Flat Racks (specify type)

(each)

135

Sheet Pan Rack

445

Insulated Tray/Steam Table Pan Rack

495

24" Vertical Clearance (standard clearance accepts 18" x 26" sheet pans)

Contact Factory

Vent Cowls with 7" Stacks and Locking Dampers

(set)

2,430

Extended Vent Cowls, with 7" Stacks, Locking Dampers & External Curtain

(set)

2,640

Splash Shields

(set)

605

Steam Pressure Regulating Valve (unmounted)

Contact Factory

Water Pressure Regulating Valve (unmounted; standard with booster)

445

Table Limit Switch (unmounted) (whisker style)

605

Table Limit Switch (unmounted) (button style)

605

Shock Arrestor (factory mounted) (unmounted on PRO series)

175

Drain Water Tempering Kit (unmounted)

1,960

Flanged Feet

605

ION Scale Prevention System (factory mounted) (unmounted on PRO series)

Contact Factory

NEW Direct Link Connectivity Solution (PRO series only)

Contact Factory

NEW Direct Link Plus+ Connectivity Solution (PRO series only)

Contact Factory

Stainless Steel Rear Enclosure Panels

Contact Factory

Chemical Pump Kit (PRO series only) (detergent and rinse aid, mounted and interwired)

1,960

Booster Heaters *(Shipping Weight: 150 lbs.) All prices reflect mounted and piped boosters.*

E-Series Electric (84 Family)

40°F / 70°F rise

\$ 6,920

PRO & E-Series Electric (44PRO Family, 64 PRO Family, & 54DR Family)

40°F / 70°F rise

6,520

PRO & E-Series Steam

40°F / 70°F rise

7,375

Upright Conveyor PRO-Series



Standard Features

- **NEW** 8" Touchscreen control
- **NEW** Automatic Drains
- **Exclusive Dual Rinse Technology**
- Advanced operator guidance
- All-purpose 29"-wide peg belt (**SlimLine** 24" belt available)
- Chemical dispensing equipment connection provisions
- Choice of tank heat: electric, steam coils or direct steam injectors
- On-board diagnostics
- Step-by-step troubleshooting assistance
- Common hot water connection
- Common drain connection
- Common electric connection (separate connection required for optional electric booster and blower-dryer)
- One piece stainless steel wash/rinse manifold system, easy to remove
- Automated delime function
- Electric eye energy sentinel (idle pump shut-off)
- Easy-to-reach top-mounted controls
- Heavy-gauge stainless construction
- Push-button start-stop station – load end
- Recirculating flushing nozzles – load end with prewash
- Rinse saver device
- Conveyor shut-off shelf – unload end
- Stainless steel enclosure panels – front & ends

General Information

The Champion Upright Conveyor dishwashing machines consist of modular sections: load, prewash, wash-rinse, Dual Rinse and unload. Each section is available in a choice of lengths to provide maximum space, labor and production efficiency. To accommodate various production levels and ware sizes, select from two (2) conveyor widths.

- **PRO Flight Series Slim:**
24" wide conveyor belt
- **PRO Flight Series:**
29" wide conveyor belt

ENERGY STAR Rated Models:

PRO Flight 4, PRO Flight 6, PRO Flight 8, PRO Flight 4 Slim, PRO Flight 6 Slim, PRO Flight 8 Slim

PRO Flight 8 Shown
(with optional Blower-Dryer)



Sectional Construction

* LOAD	
A	2.5 ft. minimum length. For more loading area, order in 1 ft. increments. * 2.5 ft. load is of cantilever design
PREWASH	
B	2.5 ft. prewash with standard external scrap basket and 1-Hp pump motor.
B4	4 ft. prewash with optional external scrap basket. 3-Hp pump motor is standard.
WASH - RINSE	
C4	4 ft. wash for CW and C Series (Contact factory for application)
C6	6 ft. wash-rinse combination for CW and C Series
C8	8 ft. wash-rinse combination for CW and C Series
DUAL - RINSE / UNLOAD	
D2	2 ft. Water Saver Section
D5	5 ft. Unload Section (minimum) Minimum 5 ft. length (Contact factory for application) Additional length available in 1 ft. increments for greater drying efficiency.

(Additional options available upon request)

Upright Conveyor E-Series

DualRinse®

Standard Features

• Exclusive Dual Rinse Technology

- All-purpose 29"-wide peg belt (SlimLine 24" belt available)
- Chemical dispensing equipment connection provisions
- Choice of tank heat: electric, steam coils or direct steam injectors
- Common hot water connection
- Common drain connection
- Common electric connection (separate connection required for optional electric booster and blower-dryer)
- One piece stainless steel wash/rinse manifold system, easy to remove
- Electric eye energy sentinel (idle pump shut-off)
- Easy-to-reach top-mounted controls
- Heavy-gauge stainless construction
- Push-button start-stop station - load end
- Recirculating flushing nozzles - load end with prewash
- Rinse saver device
- Conveyor shut-off shelf - unload end
- Stainless steel enclosure panels - front & ends
- Keep it Clean Package
 - Auto Delime
 - Wash Down

General Information

The Champion Upright Conveyor dishwashing machines consist of modular sections: load, prewash, wash-rinse, Dual Rinse and unload. Each section is available in a choice of lengths to provide maximum space, labor and production efficiency. To accommodate various production levels and ware sizes, select from two (2) conveyor widths.

- **EUCC Series:** 24" wide conveyor belt
- **EUCCW Series:** 29" wide conveyor belt

ENERGY STAR Rated Models: EUCC4, EUCC6, EUCC8, EUCCW4, EUCCW6 and EUCCW8

EUCCW8 Shown (Shown with Optional Heat Recovery)



Sectional Construction

A		* LOAD	
		A	2.5 ft. minimum length. For more loading area, order in 1 ft. increments. * 2.5 ft. load is of cantilever design
B		PREWASH	
		B	2.5 ft. prewash with standard external scrap basket and 1-Hp pump motor.
		B4	4 ft. prewash with optional external scrap basket. 3-Hp pump motor is standard.
C		WASH - RINSE	
		C4	4 ft. wash for CW and C Series (Contact factory for application)
		C6	6 ft. wash-rinse combination for CW and C Series
		C8	8 ft. wash-rinse combination for CW and C Series
D		DUAL - RINSE / UNLOAD	
		D2	2 ft. Water Saver Section
		D5	5 ft. Unload Section (minimum) Minimum 5 ft. length (Contact factory for application) Additional length available in 1 ft. increments for greater drying efficiency.

(Additional options available upon request)

Upright Conveyor (PRO Series & E-Series)

Modular Sections For EUC Series Dishwashing Machines

Load (A)	2.5' Load (minimum load section) (3 ft. load section is a cantilever design)
	Additional lengths available in 6". increments
Prewash (B)	2.5' Prewash with external scrap basket (standard)
	4' Prewash without external scrap basket
	with external scrap basket
Wash-Rinse (C)	4' Wash (contact factory for application)
	without external scrap basket
	with external scrap basket
	6' Wash-Rinse Combination
	without external scrap basket
	with external scrap basket on wash and/or rinse
	8' Wash-Rinse Combination
	without external scrap basket
	with external scrap basket on wash and/or rinse
Dual Rinse / Unload (D)	5' Unload (5' minimum unload section) (contact factory for application)
	Additional lengths available in 1 ft. increments
Approximate Shipping Weight:	EUCC Series: 150 lbs. per foot
	EUCCW Series – Dual Rinse Series: 175 lbs. per foot

Standard Tank Heat (specify one)

	Electric heaters with thermostat and positive low-water cut-off
	Closed stainless steel coils with thermostat and positive low-water cut-off
	Steam injectors with thermostat and positive low-water cut-off
NOTE: Booster Optional	Built-in steam boosters as well as built-in electric boosters are available on all unload sections. Built-in steam booster requires a minimum 6ft. unload

For Pricing on Upright Conveyors – Contact Factory

Upright Conveyor (PRO Series & E-Series)

Options

- Heat Recovery
- 48" Blower dryer - steam or electric
- Back Panel, stainless steel
- **NEW** Direct Link Connectivity Solution (PRO series only)
- **NEW** Direct Link Plus+ Connectivity Solution (PRO series only)
- Keep it Clean Package (E-Series Only)
 - Delime
 - Wash Down
- Belts, all purpose peg belt, standard
 - Flat Belt
 - Oval Tray Conveyor
 - Insulated Tray Belt
 - Sheet Pan Belt
 - Belts with Upper Rods
 - BELTS - ANY COMBINATION OF ABOVE
 - (Belt with all stainless steel components for correctional applications - special order only)
- Bumper Rail -machine mounted
- Cold Water Thermostat (for prewash)
- Conveyor, Variable Speed, Electric (standard with Quad Rinse)
- Doors, 1-piece lift out for low ceiling installations
- Insulated Hinged Doors
- Drain Interlock Switches
- Motor, Pump, 3-Hp (optional in lieu of 1-Hp on 2.5 ft. prewash)
- Split Unload (D Section)
- Start/Stop Station, Unload End
- Steam Pressure Regulating Valve (unmounted)

- Water Pressure Regulating Valve (mounted) (standard with built-in booster)

Champion Steam Booster

(Built-in) (Shipping weight: 75 lbs.)
EUCC/EUCCW (40°F max. rise)
EUCC/EUCCW (70°F max. rise)

Champion Electric Boosters

(Built-in) (Shipping Weight: 150 lbs.)
EUCC/EUCCW (40°F max. rise)
EUCC/EUCCW (70°F max. rise)

NOTE:

- Electric Boosters - contact factory for location
- Available Voltages: 208/60/3; 240/60/3; 480/60/3
- For Non-Standard Voltages, contact factory

*Installation Supervision (within the Continental U.S.):
Provided by factory authorized personnel at no additional cost for ONE day during regular working hours only. The warranty will begin after factory supervision and approval is completed. Subject to standard warranty terms.*

Allow 2 weeks for scheduling Factory supervision.

For Pricing on Upright Conveyors - Contact Factory

NOTE: Options prices apply only when ordered with machine.

Pot, Pan & Utensil Warewashing Machines



Standard Features

- Tank heater electric (steam coil or steam injector optional)
- Low-water tank heat cut-off
- 7.5-Hp drip-proof wash pump motor
- Control circuit, 120-Volt
- Counter-balanced door system
- Detergent/chemical connection provisions
- Door safety switch on each door
- Stainless steel enclosure panels (front and sides)
- Interchangeable upper and lower wash and rinse arm

- Fully-automatic wash and rinse cycle
- External lift-out refuse basket
- Recessed, front-mounted controls
- Integral 6" shelf on front-loading model
- Hold-down grid for light ware protection
- Automatic tank fill
- Vent connection, 6" diameter
- Rack Bake Sheet
- Utility Rack

Note: When ordering PP-28, specify type and quantity of optional racks required.

Pot, Pan & Utensil		Standard Voltages	Approx. Ship. Wt.	Suggested List Price
PP-28	Straight-through, corner or front-loading operation	208-240/60/3 480/60/3	800 lbs.	Contact Factory
Tank Heat (specify one)				
Electric heat with thermostat and low-water cut-off				Standard - No Charge
Stainless steel closed steam coil with thermostat and low-water cut-off				Contact Factory
Options				
Exhaust fan (1/3-Hp)			65 lbs.	Contact Factory
Rack: Bake Sheet, Stainless Steel				Contact Factory
Rack: Basket, Stainless Steel				Contact Factory
Rack: Counter Pan, Stainless Steel				Contact Factory
Rack: General Utility, Stainless Steel				Contact Factory
Steam Pressure Regulating Valve (unmounted)				Contact Factory
Water Pressure Regulating Valve (unmounted) (standard with built-in booster)				Contact Factory
ION Scale Prevention System (unmounted)				Contact Factory
Booster Heaters Shipping Weight: 150 lbs. All prices reflect mounted and piped boosters.				
Steam (stainless steel)	40°F rise - Built-in (externally mounted with cover – corner models)			Contact Factory
	70°F rise - Built-in (externally mounted with cover – corner models)			Contact Factory
Electric (stainless steel)	40°F rise - Built-in (externally mounted with cover on corner models)			Contact Factory
	70°F rise (externally mounted with cover)			Contact Factory
NOTE: Options prices apply only when ordered with machine. NOTE: For low pressure steam application, contact Factory.				
Drain Water Tempering Kit (unmounted)				Contact Factory

NON STANDARD VOLTAGES: Contact Factory for availability and price. NOTE: Options prices apply only when ordered with machine.

Pot, Pan and Rack Machines

Utensil Washers	Electric Tank Booster Heater Suggested List Price	Steam Tank & Booster Heater Suggested List Price
Model PP-10	\$ 43,290	\$ 49,935
Model PP-12-PT	59,235	63,520
Model PP-12-CPT	70,045	76,745
Model PP-20	53,590	65,255
Model PP-20-PT	78,400	95,630
Model PP-36	84,675	102,250
Options	Suggested List Price	
Steam Extraction Fan (all models except PP-20-PT & PP-36)	\$ 1,285	
Steam Extraction Fan (PP-20-PT & PP-36)	3,210	
Single Phase Wash Pump Motor (PP-10)	2,560	
Single Phase Wash Pump Motor (PP-12-PT, PP-12-CPT, PP-20, PP-20)	3,815	
Automatic Drain (All models except PP-10)	3,130	
Stainless Steel Pumped Rinse System with Electric/Gas/Steam Coil Booster Heater (PP-36, PP-20-PT)	9,025	
Utensil Rack with Hold-Down Lid	1,285	
Stainless Steel Mesh Utensil Basket with Hinged Lid	835	
Molded Plastic Utensil Basket for Small Items	205	
Stainless Steel Insert for Tray/Sheet Pans (PP-10, PP-20, PP-36)	955	
Stainless Steel Insert for Muffin/Cake Pans (PP-10, PP-20, PP-36)	955	
Tray/Sheet Pan Rack (PP-10, PP-12-PT, PP-12-CPT, PP-20, PP-20-PT)	1,170	
Stainless Steel Muffin/Cake Pan Rack (PP-10, PP-12-PT, PP-12-CPT, PP-20, PP-20-PT)	1,170	
Lift or Split Door (PP-10, PP-20, PP-36)	No Charge	
Drain Water Tempering Kit	2,060	
Stainless Steel Nozzles	600	
ION Scale Prevention System (unmounted)	Contact Factory	
Vent Fan Control Switch	410	

Pot, Pan and Rack Machines

Rack Washers

- RW-36 (electric or steam booster)
- RW-54 (electric or steam booster)
- RW-66 (electric, gas or steam booster)
- RW-72 (electric, gas or steam booster)

Options

- Automatic Drain
- External Wash-down Hose
- Steam Extraction Fan
- Fold Away Ramp System
- Additional Pit Grid
- Water Pressure Regulator
- Rinse Tank with Steam Coil Booster Heater (N/A to 3072)
- Stainless Steel Pumped Rinse System with Electric/Gas/Steam Coil Booster Heater (standard on 3072)
- Stainless Steel Hood Assembly
- Stainless Steel Hood Assembly with Steam Extraction Fan
- Pass-Thru Second Door and Extended Cabinet

Roll-in Rack Options (Stainless Steel) for Models 1536-N, 2554, 2566 and 3072

- Tray/Sheet Pan Rack
- Pot and Utensil Rack
- Sheet, Cake and Muffin Rack
- Tray/Sheet and Steam Pan Rack
- Steam Table Pan Rack
- Cake Pan Rack

NOTE: For Pot and Pan Washers listed on pages 15 & 16, specifications and terms will be those in effect at the time of shipment, and prices are subject to change without notice.

NOTE: Standard Champion warranty, terms and conditions apply except freight which is ex. works, Clearwater, Florida.

For pricing on above Pot, Pan and Rack Machines – Contact Factory
NOTE: Options prices apply only when ordered with machine.

Powered Wash Sink Systems

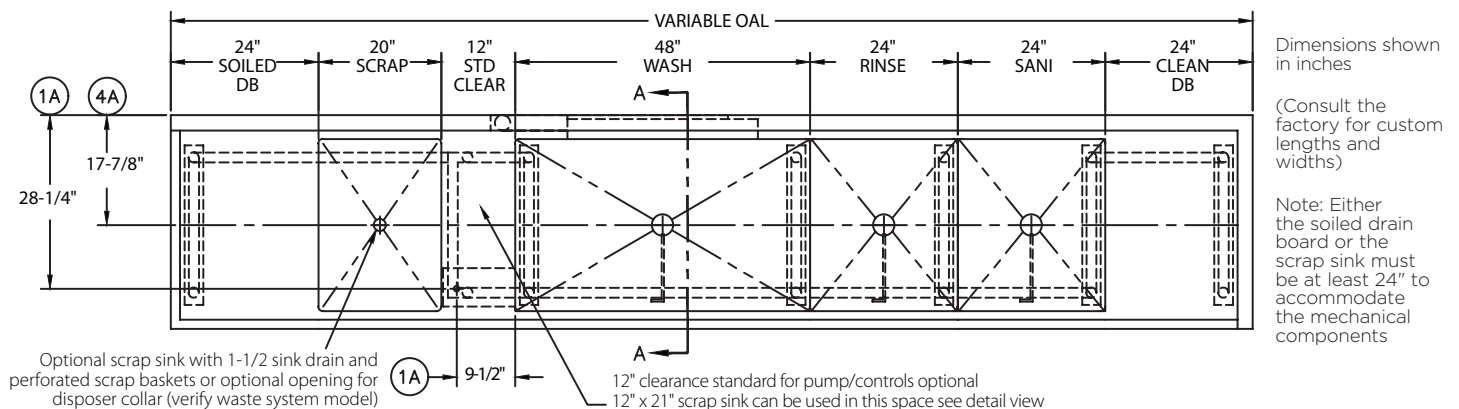
Vortex Wash System

• **NEW: Redesigned wash flow system**

- Outperforms the leading brands.
- Factory authorized startup
- Type 304 polished stainless steel construction
- 14 gauge stainless tanks and drain boards
- 11" high x 2-1/2" deep back splash
- Twist handle drains
- Stainless steel legs and cross rails
- Stainless steel adjustable bullet feet
- Stainless steel pump and impeller
- Rear discharge
- Removable strainer plates
- One 3 Hp fully enclosed wash pump motor with permanently sealed bearings
- Motor overload protection, manual reset
- Low water protection for wash pump motor
- 3,000 watt wash tank heater
- 1 year parts and labor on pumps and control panel



★ ★ Consult the factory for custom lengths and widths and for pricing on Powered Wash Sink Systems ★ ★



A	B	C	D	E	F	G	H
Edge Type	Drain Board	Scrap Sink	Wash Tank	Options	Rinse Sink	Sanitizer Sink	Drain Board
M 1-1/2" Rolled M 2-1/2" Splash	By nominal inch M 12" M 18" M 20" M 24" M 36" M 42" M 48" M 54" M 60" M w/Disposer Collar	M 18" M 20" M 24" Custom M w/Scrap Basket	M 36" M 42" M 48" M 60"	M Utensil Basket M Sheet Pan Racking System	M Omit M 20" M 24" M 36"	M Omit M 12" M 18" M 20" M 24" M 36" M 42" M 48" M 54" M 60"	M 1-1/2" Rolled M 2-1/2" Splash

NON STANDARD VOLTAGES: Contact Factory for availability and price. NOTE: Options prices apply only when ordered with machine.

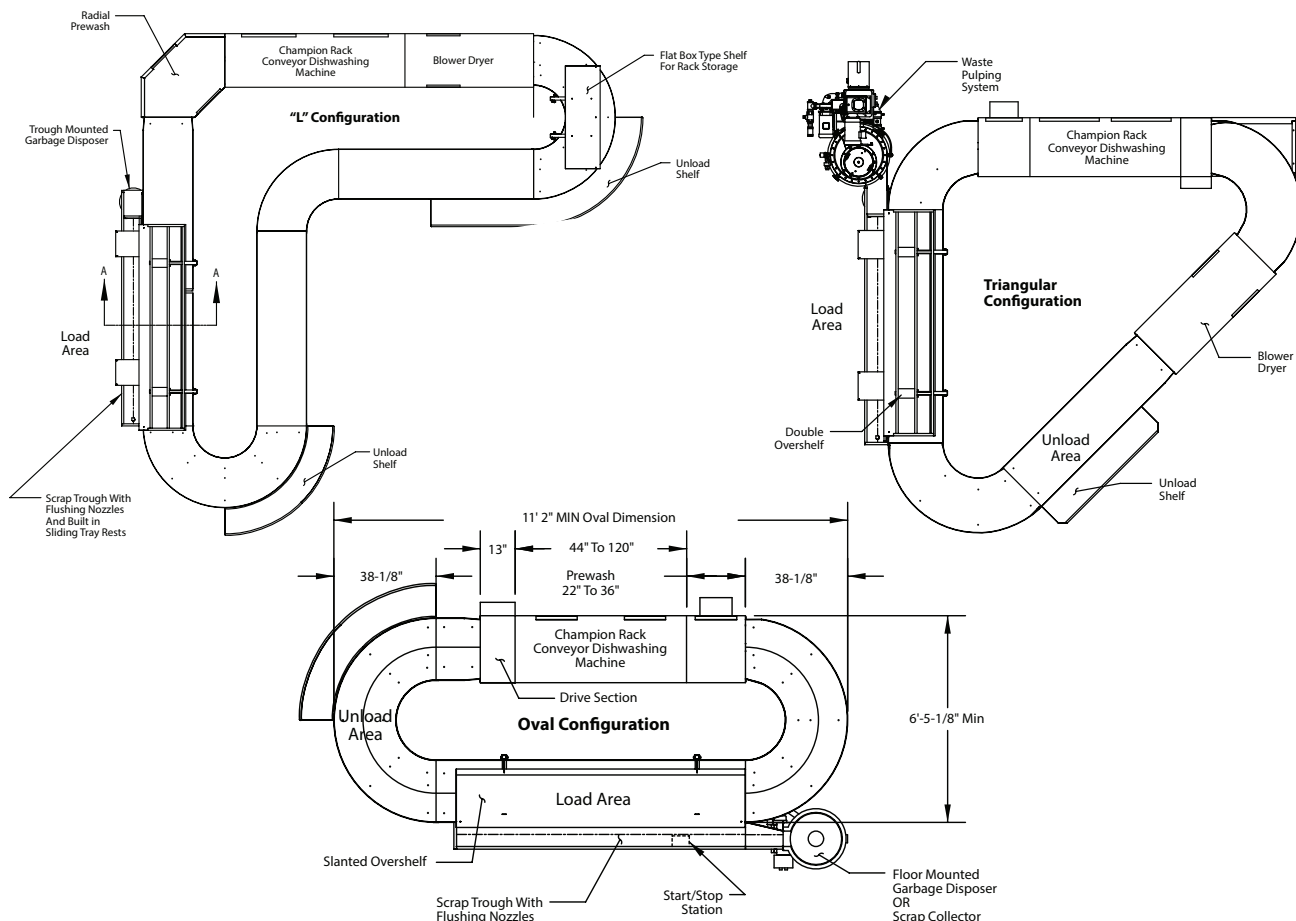
Circular Conveyor CC Series

The complete warehousing system!

The Circular Conveyor offers high-volume operators a choice of continuous dish rack or direct loading conveyor belts. Custom designed for specific applications, this system is available in high or low temperature models and with a complete line of deluxe options, such as sinks, troughs, disposers, overhead shelves, insulated hoods, a space-saving prewash unit on the radius, and a 24-inch vertical clearance to accommodate large trays. The access doors may be located on the inside or outside of the circle. 200 to 331 racks per hour (NSF rated).

Installation Supervision (Continental U.S.): Provided by factory authorized personnel at no additional cost of one day during regular working hours only. The warranty will begin after factory supervision and approval of final installation is completed subject to standard warranty terms.

Consult Factory for pricing on Champion CC Machines.



NON STANDARD VOLTAGES: Contact Factory for availability and price. NOTE: Options prices apply only when ordered with machine.

Waste Handling Systems



SONIC 5PRO

The Sonic PRO series food waste reduction system by Bi-Line Conveyor Systems can reduce organic waste volume by as much **as 85 percent** and can process all organics including: produce, fruits, cut flowers, meat, fat trimmings, paper napkins, coffee grounds, spoiled milk, deli products and some soft plastics.

The Sonic PRO series can be designed in either a closed-coupled or remote design. The system is fully customizable, designed to meet the unique needs of any facility from coffee houses and restaurants to hospitals, schools and other institutions.

Model	Description	Capacity	Suggested List Price
SONIC 5 PRO	5 Hp - 24" Advanced Food Waste Reduction System	750 lbs	Contact Factory
SONIC 7 PRO	7 Hp - 30" Advanced Food Waste Reduction System	1,000 lbs.	Contact Factory
Options			
Grabber Magnets (set)			Contact Factory
Remote Start-Stop Station (unmounted)			Contact Factory



Model P5-24

Pulpers		Approx. Ship. Wt.	Suggested List Price
P5-24	(5-Hp)	1,000 lbs.	Contact Factory
P7-30	(7.5-Hp)	1,100 lbs.	Contact Factory
Options			
Hose Reel			Contact Factory
Automatic Shutdown Timer			Contact Factory

Bi-Line by Champion



Bi-Line Conveyor Systems are built to individual customer requirements and can combine a high-volume Champion flight or rack machine that feature low energy and water consumption levels, with a Bi-Line Conveyor for continuous high efficiency, space saving and maintenance-free warewashing.

The system's flexible design eliminates high traffic patterns for loading and unloading service ware, saving time and reducing handling and breakage. Space-saving conveyor layouts are available in vertical, slim line or standard configuration and can even transport wares from multiple floor levels.

Soiled Tray Conveyors

Model	Description	Suggested List Price
CS-207	Dual 7" Flex Belt Accumulator	Contact Factory
CS-110	Single 10" Flex Belt Accumulator	Contact Factory
CS-210	Dual 10" Flex Belt Accumulator	Contact Factory
PS-110	Single 10" Pin & Slat Accumulator	Contact Factory
PS-210	Dual 10" Pin & Slat Accumulator	Contact Factory
PS-112	Single 12" Pin & Slat Accumulator	Contact Factory
MT-12	Single 12" Mat Top Belt	Contact Factory
MT-18	Single 18" Mat Top Belt	Contact Factory

Accumulators

RTP	Rotary Tray Accumulator – Projection	Contact Factory
RTS	Rotary Tray Accumulator – Slim Line	Contact Factory
VAS	Vertical Tray Accumulator	Contact Factory

Gravity Rollers

GRS-24	24" Soiled Gravity Rollers	Contact Factory
GRS-21	21" Soiled Gravity Rollers	Contact Factory
GRC-21	21" Clean Gravity Rollers	Contact Factory

Tray Make-Up Conveyors

FBM-10	Fabric Belt Tray Make-Up Conveyor	Contact Factory
---------------	-----------------------------------	------------------------

Terms & Conditions of Sale

- 1. TERMS.** Champion Industries is referred to herein as "Seller." The purchaser of the machine(s) and/or part(s) subject hereto ("Property") is referred to as "Buyer."

No terms or conditions other than those stated herein shall be applicable to the sale of the Property unless incorporated as part of the order or quotation constituting a part of the Purchase Agreement described below. Any order for Property, and the sale thereof by the Seller to the Buyer, shall be governed by the North Carolina Uniform Commercial Code, by the agreement of the parties, and by any applicable policy statement issued by the Seller.

- 2. PURCHASE AGREEMENT.** Any order for or offer to purchase the Property, excluding parts, shall not be binding on the Seller unless it is accepted in writing by the Seller's acknowledgment reflecting such acceptance. When so accepted it shall be binding in accordance with these Terms and Conditions of Sale. No modifications shall be permitted unless agreed to in writing by the parties. Unless otherwise specifically agreed in writing, any delivery or shipping date shown, or mentioned by the Seller, is furnished only for the convenience of the Buyer, is estimated, and is not a date by which the Seller has agreed to ship or deliver the Property; provided however, after production of a machine, payment for the machine is due within terms, unless Seller otherwise agrees.

Change orders for the Property will not be permitted without the Seller's consent. The Seller may impose a charge in connection with any change order that the Seller accepts.

Each shipment or delivery is subject to Seller's approval of Buyer's creditworthiness including, without limitation, determination that Buyer is not in default on any obligation to Seller.

- 3. PRICES.** Unless otherwise agreed: (i) all prices will be F.O.B. Factory, (ii) and all sales are subject to the terms and pricing of the applicable policy in effect on the date that the order for the Property is accepted. All invoices not paid within 30 days of the date of their issue shall be subject to a delinquency charge of 1.5% per month (41095% per day), or such lesser amount as may be the maximum rate permitted by law. Buyer agrees to pay all costs of collection including such reasonable attorneys' fees as may be allowed by law.

- 4. DELIVERY.** If a delivery is F.O.B. Factory, shipment of the Property will be in accordance with Buyer's instructions when reasonable and practical. In the absence of shipping instructions on F.O.B. Factory, or in the case of F.O.B. Destination, Seller may ship by such method or carrier as Seller may deem reasonable. For F.O.B. Factory shipments, the risk of loss of Property shall pass to the Buyer upon delivery of the Property to a public carrier.

The Seller shall not be liable for failure in the delivery of the Property as a result in whole or part, of fire, flood, tornado, hurricane or other acts of God; because of any casualty, accident, embargo, strike, lockout, work stoppage, war or government regulation; or for any other reason beyond the Seller's reasonable control including, but not limited to, late delivery, or nondelivery, of any part or component of the Property that is the subject hereof.

- 5. DISCLAIMER OF WARRANTIES AND LIMITATIONS OF DAMAGES.** MACHINES AND PARTS ARE WARRANTED ONLY TO THE EXTENT REFLECTED IN THE SEPARATE MANUFACTURER'S LIMITED WARRANTY PROVIDED. THE SELLER MAKES NO OTHER WARRANTIES, EXPRESS OR IMPLIED, INCLUDING, BUT NOT LIMITED TO, ANY WARRANTY OF MERCHANTABILITY, OR FITNESS OF PURPOSE. THE SELLER SHALL NOT BE LIABLE TO BUYER FOR INCIDENTAL OR CONSEQUENTIAL DAMAGES. In case of a breach by the Seller, the Buyer's exclusive remedy shall be, at the Seller's option, repair or replacement, or the return of the machine to the Seller and refund to the Buyer of the purchase price. In no event shall the Seller's liability exceed the purchase price of the machine.

- 6. MACHINE AND SPECIAL PARTS ORDER CANCELLATION AND RETURN.** Buyer acknowledges that the Seller will have incurred costs in connection with the sale of a machine or special parts order; that if the machine or special parts order is sold by the Seller pursuant to a confirmed order that Buyer's failure to accept delivery of a machine or special parts order as to which Seller has given its acceptance will result in damage to the Seller which will be difficult to ascertain; and that liquidated damages as follows are reasonable and will be paid by Buyer if the machine or special parts order is not purchased, or returned in new condition.

- (a) As to standard machines, the Buyer will pay the Seller, as liquidated damages, 25% of the agreed price of the machine.
- (b) As to all other machines and special parts orders, the Buyer will pay the Seller, as liquidated damages, the following percentages of the agreed price of the machine or special parts order:
 - I. 25% of the agreed price upon cancellation before production of the machine or special parts order begins,
 - II. 35% of the agreed price after production of the machine or special parts order has begun and before the machine or special parts order is substantially completed, and
 - III. 50% of the agreed price after substantial completion or return of the machine or special parts order in new condition.

- 7. DISPUTE RESOLUTION.** Any unresolved dispute arising in connection herewith shall be resolved by arbitration in Winston-Salem, North Carolina, under the rules of the American Arbitration Association, and judgement upon the award rendered by the arbiter(s) may be entered in any court.

- 8. GENERAL PROVISIONS.** The sale of the Property herein identified shall be governed by the law of North Carolina. Failure or delay of the Seller in exercising any right, power or privilege shall not operate as a waiver of any such right, power or privilege. If any portion of these Terms and Conditions of Sale shall be held to be invalid or unenforceable, all other provisions shall nevertheless remain valid and enforceable in accordance with their terms.

Limited Warranty

Champion Industries (herein referred to as Champion), 3765 Champion Blvd, Winston-Salem, North Carolina 27105, warrants machines, and parts, as set out below.

Warranty of Machines: Champion warrants all new machines of its manufacture bearing the name "Champion" and installed within the United States to be free from defects in material and workmanship for a period of one (1) year after the date of installation or fifteen (15) months after the date of shipment by Champion, whichever occurs first. (See below for special provisions relating to glasswashers.) The warranty registration card must be returned to Champion within ten (10) days after installation. If warranty card is not returned to Champion within such period, the warranty will expire after one year from the date of shipment. Champion will not assume any responsibility for extra costs for installation in any area where there are jurisdictional problems with local trades or unions.

If a defect in workmanship or material is found to exist within the warranty period, Champion, at its election, will either repair or replace the defective machine or accept return of the machine for full credit; provided, however, as to glasswashers, Champion's obligation with respect to labor associated with any repairs shall end (a) 120 days after shipment, or (b) 90 days after installation, whichever occurs first. In the event that Champion elects to repair, the labor and work to be performed in connection with the warranty shall be done during regular working hours by a Champion authorized service technician. Defective parts become the property of Champion. Use of replacement parts not authorized by Champion will relieve Champion of all further liability in connection with its warranty. In no event will Champion's warranty obligation exceed Champion's charge for the machine.

The following are not covered by Champion's warranty:

- a. Lighting of gas pilots or burners.
- b. Cleaning of gas lines.
- c. Replacement of fuses or resetting of overload breakers.
- d. Adjustment of thermostats.
- e. Adjustment of clutches.
- f. Opening or closing of utility supply valves or switching of electrical supply current.
- g. Cleaning of valves, strainers, screens, nozzles, or spray pipes.
- h. Performance of regular maintenance and cleaning as outlined in operator's guide.
- i. Damages resulting from water conditions, accidents, alterations, improper use, abuse,

tampering, improper installation, or failure to follow maintenance and operation procedures.

- j. Wear on Pulper cutter blocks, pulse vanes, and auger brush.

Examples of the defects not covered by warranty include, but are not limited to:

- (1) Damage to the exterior or interior finish as a result of the above,
- (2) Use with utility service other than that designated on the rating plate,
- (3) Improper connection to utility service,
- (4) Inadequate or excessive water pressure,
- (5) Corrosion from chemicals dispensed in excess of recommended concentrations,
- (6) Failure of electrical components due to connection of chemical dispensing equipment installed by others,
- (7) Leaks or damage resulting from such leaks caused by the installer, including those at machine table connections or by connection of chemical dispensing equipment installed by others,
- (8) Failure to comply with local building codes,
- (9) Damage caused by labor dispute.

Warranty of Parts: Champion warrants all new machine parts produced or authorized by Champion to be free from defects in material and workmanship for a period of 90 days from date of invoice. If any defect in material and workmanship is found to exist within the warranty period, Champion will replace the defective part without charge.

DISCLAIMER OF WARRANTIES AND LIMITATIONS OF LIABILITY. CHAMPION'S WARRANTY IS ONLY TO THE EXTENT REFLECTED ABOVE. CHAMPION MAKES NO OTHER WARRANTIES, EXPRESS OR IMPLIED, INCLUDING, BUT NOT LIMITED TO, ANY WARRANTY OF MERCHANTABILITY, OR FITNESS OF PURPOSE. CHAMPION SHALL NOT BE LIABLE FOR INCIDENTAL OR CONSEQUENTIAL DAMAGES. THE REMEDIES SET OUT ABOVE ARE THE EXCLUSIVE REMEDIES FOR ANY DEFECTS FOUND TO EXIST IN CHAMPION DISHWASHING MACHINES AND CHAMPION PARTS, AND ALL OTHER REMEDIES ARE EXCLUDED, INCLUDING ANY LIABILITY FOR INCIDENTALS OR CONSEQUENTIAL DAMAGES.

Champion does not authorize any other person, including persons who deal in Champion dishwashing machines, to change this warranty or create any other obligation in connection with Champion dishwashing machines.



Notes



Flight Machines

Pot & Pan
Washers

Door Machines

Rack Machines

Waste Management
Systems

Undercounter
Machines

Champion®

The Dishwashing Machine Specialists

OVER 130 YEARS OF KEEPING IT CLEAN

3765 Champion Boulevard | Winston-Salem, NC USA 27106 | 800-532-8591
ChampionIndustries.com

an Ali Group Company



The Spirit of Excellence